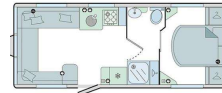
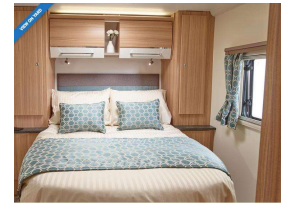


## 2024 Bailey Pegasus Messina



### INFORMATION

#### Cash Price

Includes GST

**\$98,995**

+ on-road-costs of \$1,250

#### Stock ID

9854

#### Body

Caravan 21 - 24ft

#### VIN

SGBTD4BYPPS02057

#### Odometer

-

Bailey 4 berth caravan, island bed model. Uses the renowned Bailey Alu-Tech construction system.

#### Specifications

Shipping length: 7.863m

Internal length: 6.334m

Overall width: 2.450m

Height: 2.583m

Weight

GVM: 1669kg

Tare Weight: 1510kg

Total user payload: 159kg

Bed sizes

Front double: 2.21m x 1.29m

Rear Fixed Double: 1.85m x 1.39m

Awning size: 1077cm

Body Features

NEW Dual finish Italian design overhead curved locker doors with 'canvas' textured contrasting stripe.

Structural locker dividers with a greater load-bearing capacity.

Premium quality chrome finish fixture and fittings.

'Nordic Stone' finish freestanding table with dedicated storage.

2-drawer front chest with slide-out occasional table and soft close drawers.

NEW Low-level storage cupboard beneath the front chest.

G-shaped front lounge with sliding front dinette table.

Slatted front bed make-up system on easy-glide track.

#### Features

- » BATTERY CHARGER
- » BLINDS
- » CASSETTE TOILET
- » CURTAINS
- » DOOR FLY SCREENS
- » FITTED CARPETS
- » FREEZER
- » FRIDGE
- » FRIDGE/FREEZER
- » GAS HOB
- » GRILLE
- » Heater
- » ISLAND BED
- » LOOSE FIT CARPETS
- » MAINS ELECTRICITY
- » MICROWAVE
- » OVEN
- » SEPERATE SHOWER
- » Shower
- » SMOKE ALARM
- » STEREO SYSTEM
- » WATER HEATER

**Peter Mcphail**

0274 734 914

peter@motorhub.co.nz

**William McPhail**

021 0269 3996

william@motorhub.co.nz

Motor Hub, Phone 0800 486 287, Email peter@motorhub.co.nz

393 Eilerslie-Panmure Highway, Mount Wellington, Auckland 1060, New Zealand

www.motorhub.co.nz